

Rack and pinion door closer with link arm

**Product description**

- Rack and pinion door closer with link arm
- Certified in compliance with EN 1154, size 2/3/4/5
- For single action doors up to 1250 mm wide

**Overview of Advantages**

- Suitable for fire and smoke protection doors
- Can be used for left and right-handed doors
- Thermodynamic valves for consistent performance
- Closing speed, latching speed and backcheck adjustable via front facing regulating valves
- Closing force configurable
- Opening angle up to 180° (EN5 = 125°)
- Standard colours: silver EV1; white, similar to RAL9016; brown, similar to RAL8014; black, similar to RAL9005

**Note**

- Not for use on fire and smoke protection doors in Germany

**Accessories/Individual parts**

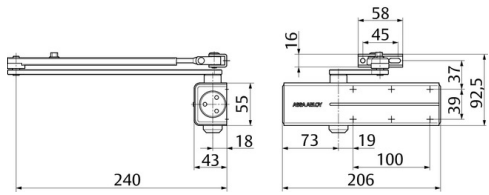
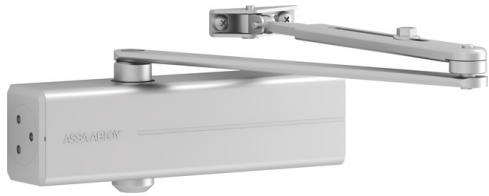
- DCL140-----EV1- (Order number: )
- DCL140-----9016 (Order number: )
- DCL140-----8014 (Order number: )
- DCL140-----9005 (Order number: )
- DCL141-----EV1- (Order number: )
- DCL141-----9016 (Order number: )
- DCL141-----8014 (Order number: )
- DCL141-----9005 (Order number: )
- DCA154-----EV1- (Order number: )
- DCA154-----9016 (Order number: )
- DCA154-----8014 (Order number: )
- DCA154-----9005 (Order number: )
- DCG143-----EV1- (Order number: )
- DCG143-----9016 (Order number: )
- DCG143-----9005 (Order number: )
- DCA161-----EV1- (Order number: )
- DCA161-----9016 (Order number: )
- DCA161-----8014 (Order number: )
- DCA161-----9005 (Order number: )
- DCA168-----EV1- (Order number: )

**The advantages at a glance**

Customer segment	Advantages
Project planners	Compact design Modern design Favourably priced, reliable closer model
Builders	Quick and easy installation Can be used for left and right-handed doors Easy to adjust
Trade	Inexpensive closer model for standard doors All-inclusive package with door closer and link arm
User	Largely unaffected by temperature fluctuations because of thermodynamic valves Backcheck feature offers optimum protection for doors and walls

**Technical data**

Closing force	EN 2/3/4/5
Door width up to	1250 mm
Suitable for fire doors	Yes
DIN direction	Left / right handed
Closing speed	Variable between 180°-15° / EN5 = 125°-15°
Latching speed	Variable between 15°-0°
Backcheck effect	Variable above 75°



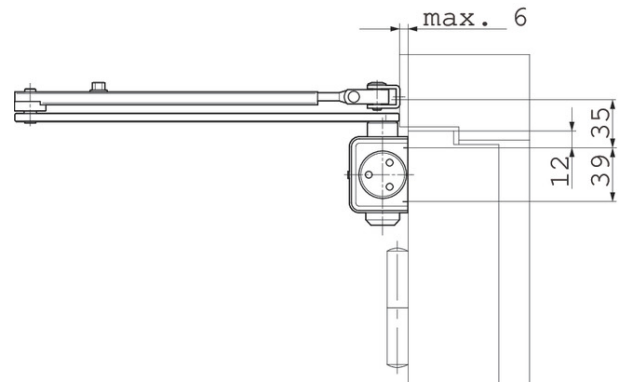
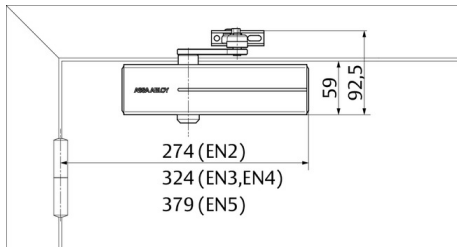
CE marking for building products	Yes
Certified in compliance with	EN 1154
Length	206 mm
Height	55 mm
Depth	43 mm
Weight	1.75 kg

#### Variants that can be ordered

Order number	Description
DC140-----DEV1-	Complete with rod, EN size 2/3/4/5, silver EV1
DC140-----D9016	Complete with rod, EN size 2/3/4/5, white, similar to RAL9016
DC140-----D8014	Complete with rod, EN size 2/3/4/5, brown, similar to RAL8014
DC140-----D9005	Complete with rod, EN size 2/3/4/5, black, similar to RAL9005
DC140-0---DEV1-	EN size 2/3/4/5, silver EV1 (without link arm)
DC140-0---D9016	EN size 2/3/4/5, white, similar to RAL9016 (without link arm)
DC140-0---D8014	EN size 2/3/4/5, brown, similar to RAL8014 (without link arm)
DC140-0---D9005	EN size 2/3/4/5, black, similar to RAL9005 (without link arm)

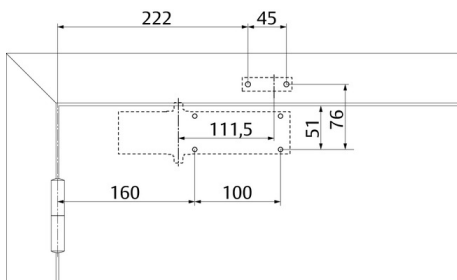
**view construction**

**Required space on doors**



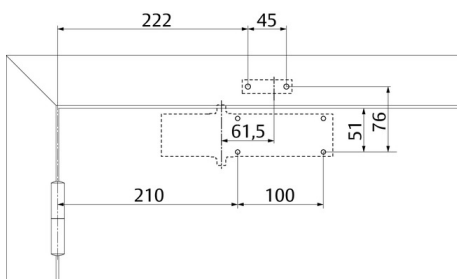
Left handed shown in diagram  
Right handed is the reverse

**Installation dimensions**



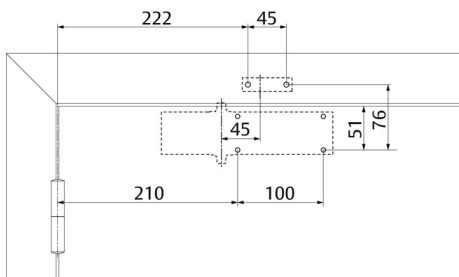
Installation dimensions EN2

**Installation dimensions**



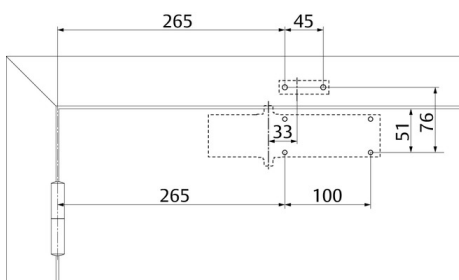
Installation dimensions EN3

## Installation dimensions



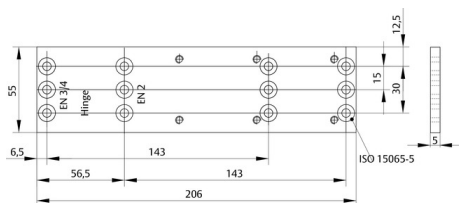
## Installation dimensions EN4

## Installation dimensions

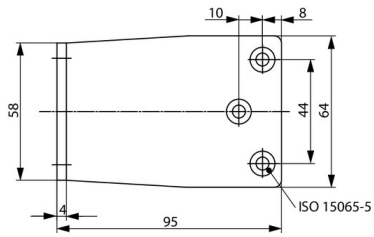


## Installation dimensions EN5

## Mounting Plate A161



## Parallel arm bracket A154



For Parallel Arm installation.

Check suitability for use on fire and smoke protection doors.