

DC826

Concealed door closer with rack and pinion technology and guide rail



ASSA ABLOY DC826

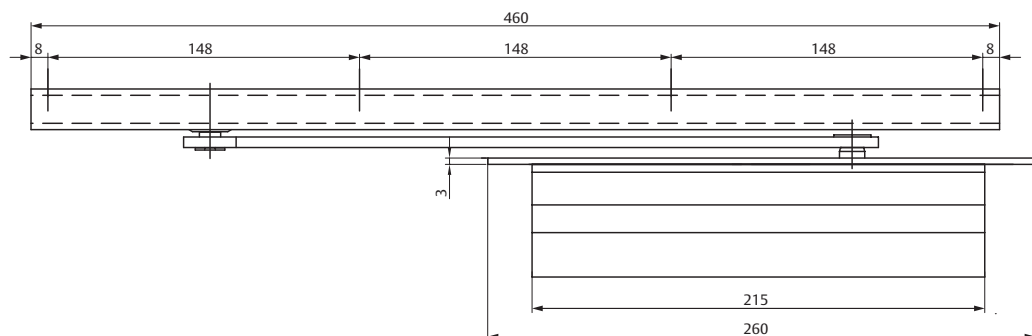
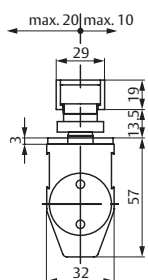
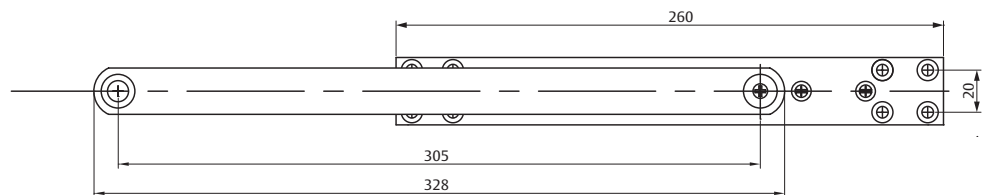
- Concealed door closer with rack and pinion technology and guide rail
- Certified in compliance with EN 1154
- Suitable for fire and smoke protection doors (EN3 model)
- For single action doors up to 950 mm wide

Characteristics of DC826

- Can be used for left and right handed doors
- Opening angle up to 115°
- Closing speed and latching speed adjustable from top facing regulating valves
- Standard colours: silver EV1



CE	ASSA ABLOY Sicherheitstechnik GmbH Bildstockstraße 20 72458 Albstadt	20						
	DC826	EN 1154:1996 / A1:2002 / AC:2006 1121-CPR-AD5452	3	8	3	1	1	3
Dangerous substances: None								



DC826

Technical attributes

Technical attributes	
Closing force	EN 3
Door width up to	950 mm
Suitable for fire doors	Yes
Handing	Left / right handed
Closing speed	Variable between 115°-0°
Latching speed	Variable between 15°-0°
Certified in compliance with	EN 1154
CE marking for building products	Yes
Length	215 mm
Height	57 mm
Depth	32 mm
Weight	1.9 kg

The advantages at a glance

Our service for you: here you can see the individual advantages of our door closer models for your respective field of business.

Customer segment	Advantages
Project planners	- Extensive range of uses: Fire and smoke protection doors as well as standard doors - Modern design - Compact design
Builders	- Slim size that fits to almost any door - Suitable for left and right handed doors - One installation template
User	- Concealed installation - Adjustable closing speed

Specifications for DC826

ASSA ABLOY door closer DC826 with guide rail

- Concealed installation
- Closing force: EN 3
- Closing and latching speed adjustable
- Suitable for fire and smoke protection doors
- CE approved
- Suitable for left and right handed doors

Accessories:

- Mechanical hold-open device A278 (not for fire and smoke protection doors)
- Mechanical opening damper A279

Colour:

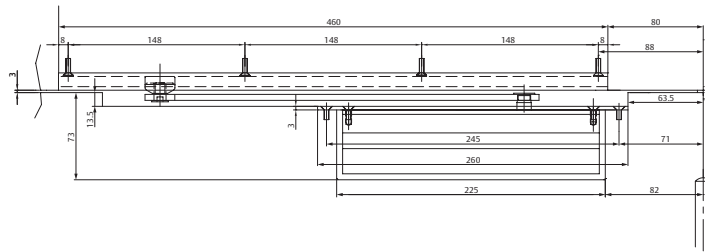
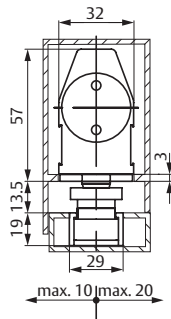
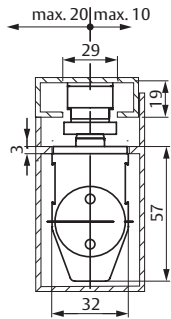
- Silver EV1

You can find the complete specifications on the internet at: www.assaabloy.de under „Service“

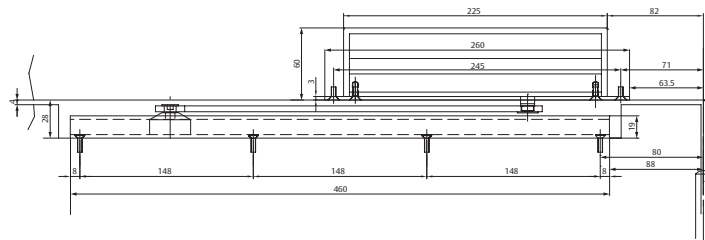
DC826

Dimensional drawings, accessories and order placement information

Concealed systems



Installation dimensions for standard application
Left handed door shown in diagram



Installation dimensions for top jamb application
Left handed door shown in diagram

Hold-open device A278

Mechanical hold-open device for doors which sometimes need to be secured in the open position.

Simple fitting into guide rail.

Hold-open angle max. 110°.

Adjustable hold-open force.

Not approved for use on fire and smoke protection doors.



Opening damper A279

Helps to prevent the door and door handle from hitting a return wall.

Simple fitting into guide rail.

Opening damper continuously adjustable up to an opening angle of max. 110°.

Does not replace a door stop.



Article / Feature	Order no.
DC826, EN3, silver EV1	D C 8 2 6 - - - - - E V 1 -
Hold-open device A278	D C A 2 7 8 - - - - -
Opening damper A279	D C A 2 7 9 - - - - -