

## DC860 with G884

Concealed door closer with Cam-Motion® technology and guide rail with integrated mechanical coordinator and two electro-mechanical hold-open devices

## Product description

- Concealed door closer with Cam-Motion® technology and guide rail with integrated mechanical coordinator and two electro-mechanical hold-open devices for double leaf doors
- Guide rail is certified in compliance with EN1155 and EN 1158, size 3-6
- Closer is certified in compliance with EN1154, size 1-5
- Barrier-free in accordance with DIN18040 for door width up to max. 1250mm
- Meets the requirements of DIN SPEC 1104 / CEN15894
- Suitable for fire and smoke protection double leaf doors, hinge distance 1350-2500 mm
- DIBt approval with different smoke detection systems

## Overview of Advantages

- Concealed guide rail with integrated electro-mechanical hold-open device on both sides and door coordinator based on wedge system
- Hold-open angle adjustable between 80° - 120°
- Continuously adjustable holding force
- Large range of applications
- Standard colours: silver EV1
- Customised finishes available on request

## Note

- Concealed guide rail G882 / G884
- Facts for door closer see DC860
- Additional verification of suitability required for the respective fire or smoke protection door

## Characteristics G882

- Concealed mechanical coordinator with two electro-mechanical hold-open devices for double leaf doors
- Possible to keep active leaf or both door leaves open

## Characteristics G884

- Concealed mechanical coordinator with one electro-mechanical hold-open device for double leaf doors
- Possible to keep both door leaves open by using only one electro-mechanical hold-open device

## The advantages at a glance

| Customer segment | Advantages   |
|------------------|--|
| Project planners | Concealed door closer products prefers esthetic advantages for every solutions Fulfils barrier-free building requirements (EA / CEN TR 15894) Extensive range of uses: Fire and smoke protection doors as well as standard doors Compact design, small size Suitable for steel, wooden and aluminium profile doors |
| Builders         | Quick and easy installation Quickly and easily adjustable  |
| Trade            | Reduced inventory costs due to modular product range One single product suitable for a large variety of mounting positions   |
| User             | Correct closing sequence guaranteed in every situation Adjustable operating force, to meet door construction requirements and user need  |

## Technical data

|   |                                 |
|---|---------------------------------|
| Required power supply                           | 24 V DC                         |
| Max. opening angle for active and inactive leaf | Up to 120°                      |
| Certified in compliance with                    | EN 1155 and EN 1158             |
| Length  | Depending on overall door width |
| Height  | 30 mm                           |
| Depth   | 26 mm                           |
| Hinge distance                                  | 1350-2500 mm                    |
| Suitable for fire doors                         | Yes                             |
| CE marking for building products                | Yes                             |
| Color   | Customised finish               |



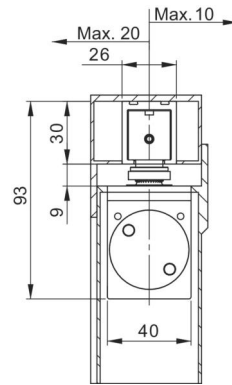
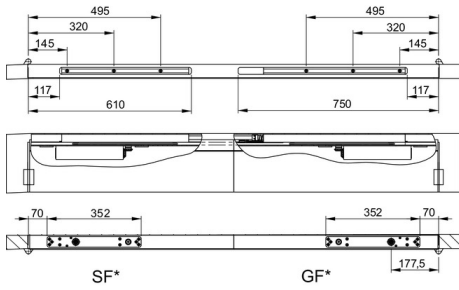
---

Article number DCG884-----XXXX

---

view construction

Installation dimensions



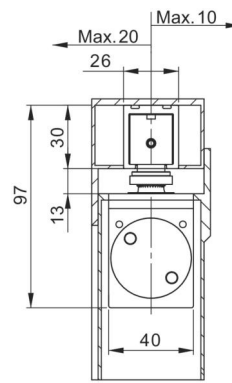
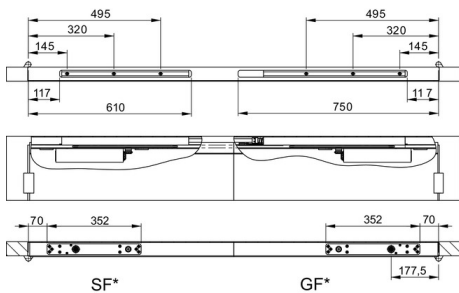
Right handed door shown in diagram

Left handed door is the reverse

SF\* = Passive leaf

GF\* = Active leaf

Installation dimensions with 4 mm axis extension



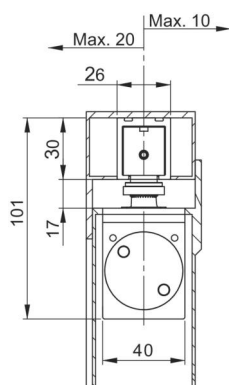
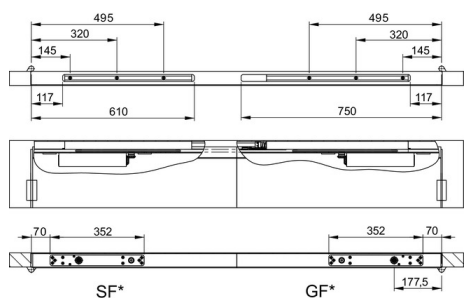
Right handed door shown in diagram

Left handed door is the reverse

SF\* = Passive leaf

GF\* = Active leaf

## Installation dimensions with 8 mm axis extension



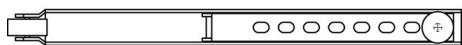
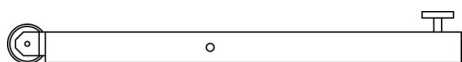
Right handed door shown in diagram

Left handed door is the reverse

SF\* = Passive leaf

GF\* = Active leaf

## Carry bar A101



Enables the correct opening sequence of double doors, installed to inactive door leaf on non-hinge side