

Concealed door closer with Cam-Motion® technology and guide rail with integrated mechanical coordinator for double leaf doors

Concealed door closer with Cam-Motion® technology and guide rail with integrated mechanical coordinator

Product description

- Concealed door closer with Cam-Motion® technology and guide rail with integrated mechanical coordinator for double leaf doors
- Guide rail is certified in compliance with EN 1158, size 3-6
- Closer is certified in compliance with EN1154, size 1-5
- Barrier-free in accordance with DIN18040 for door width up to max. 1250mm
- Meets the requirements of DIN SPEC 1104 / CEN15894
- for double-leaf fire and smoke protection doors with a hinge distance of 1350 – 2500 mm
- * Additional verification of suitability required for the respective fire or smoke protection door

Overview of Advantages

- Concealed guide rail with integrated mechanical door coordinator based on wedge system
- Closing speed and latching speed adjustable from top facing regulating valves
- Built-in backcheck
- Thermodynamic valves for consistent performance
- Versions with 4 mm and 8 mm spindle extensions
- Large range of applications
- Standard colours: silver EV1
- Customised finishes available on request

Note

- Concealed guide rail G881
- Facts for door closer see DC860
- Additional verification of suitability required for the respective fire or smoke protection door

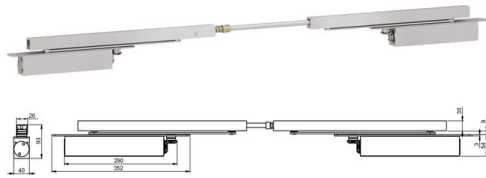
The advantages at a glance

Customer segment	Advantages
Project planners	Extensive range of uses: Fire and smoke protection doors as well as standard doors Fulfils barrier-free building requirements (EA / CEN TR 15894) Comprehensive functions, standard or optional
Builders	Quick and easy installation Quickly and easily adjustable Suitable for left and right handed doors
Trade	Reduced inventory costs due to modular product range One single product suitable for a large variety of mounting positions
User	Easier door opening and improved accessibility due to rapidly decreasing torque Largely unaffected by temperature fluctuations because of thermodynamic valves

Technical data

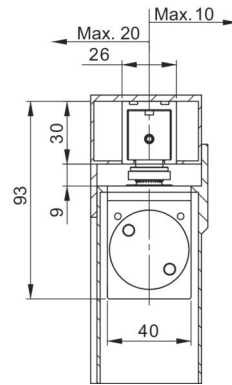
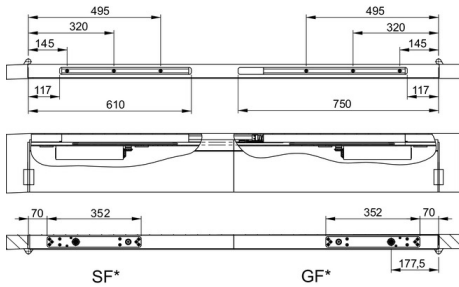
Suitable for fire doors	Yes
Max. door opening angle	Up to 120°
Certified in compliance with	EN 1158
CE marking for building products	Yes
Length	Depending on overall door width
Height	30 mm
Depth	26 mm
Hinge distance	1350-2500 mm
Color	Silver EV1

Article number	DCC881-----EV1-
EAN	4042203432833



view construction

Installation dimensions



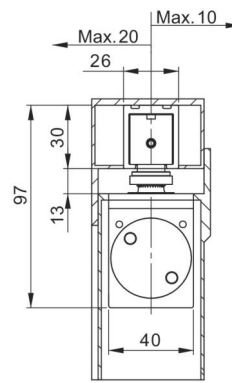
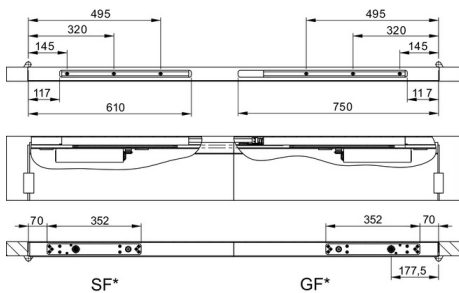
Right handed door shown in diagram

Left handed door is the reverse

SF* = Passive leaf

GF* = Active leaf

Installation dimensions with 4 mm axis extension



Right handed door shown in diagram

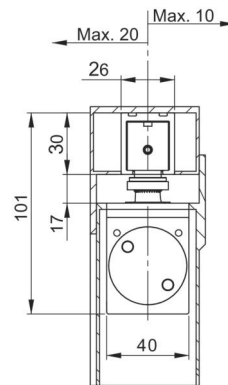
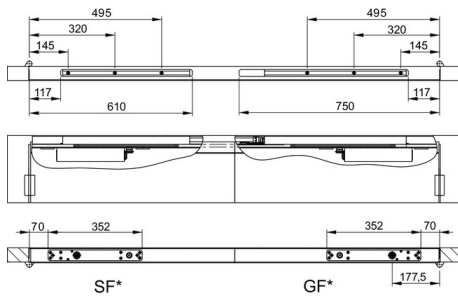
Left handed door is the reverse

SF* = Passive leaf

GF* = Active leaf

Concealed door closer with Cam-Motion® technology and guide rail with integrated mechanical coordinator for double leaf doors

Installation dimensions with 8 mm axis extension



Right handed door shown in diagram

Left handed door is the reverse

SF* = Passive leaf

GF* = Active leaf